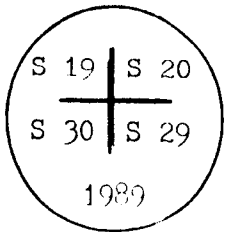


CERTIFIED LAND CORNER RECORDATION

'89 MAY 8 PM 4 39

DESCRIPTION OF CORNER EVIDENCE FOUND, AND ORIGINAL RECORD (if known)

Found a set marked granite boulder. The G.L.O. monument described as a granite stone 18"x9"x7" set in the year of 1870.

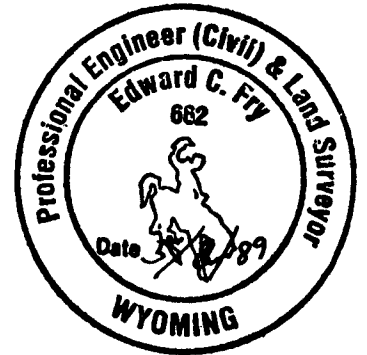
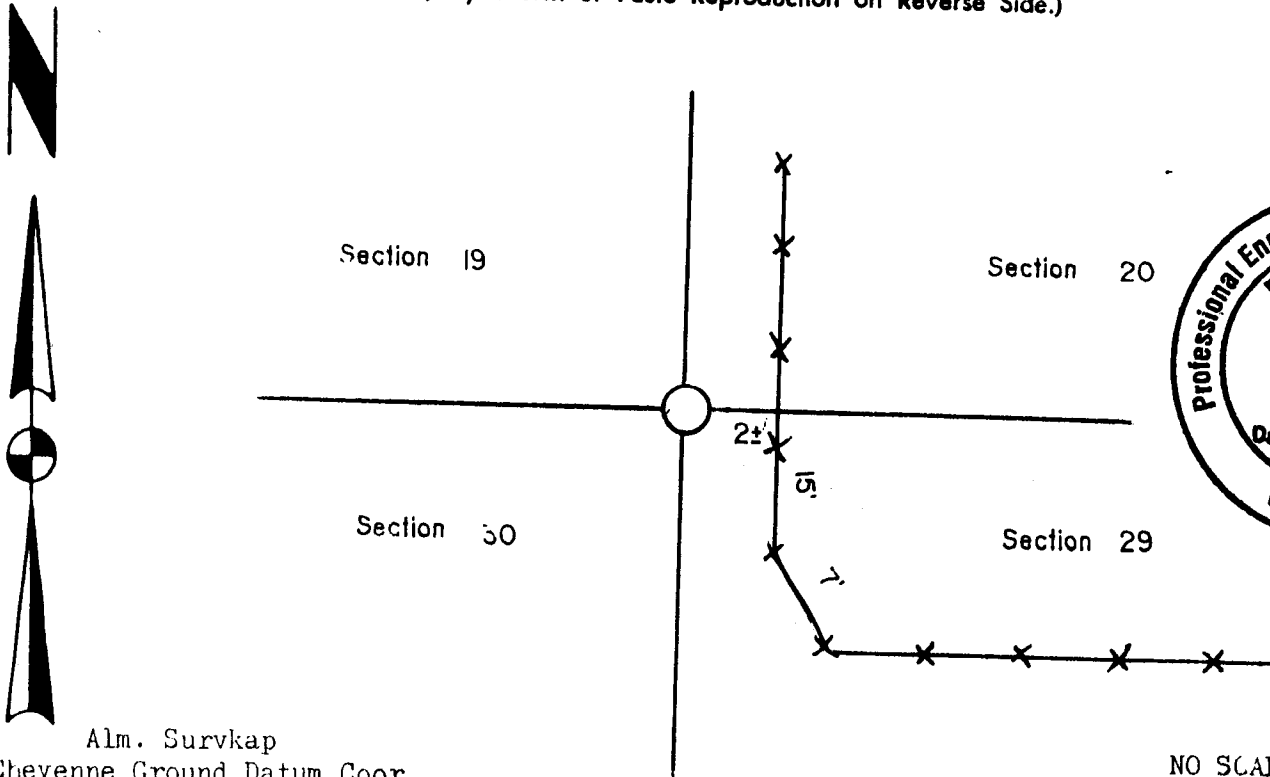


T 13 N R 66 W

DESCRIPTION OF MONUMENT AND ACCESSORIES ESTABLISHED TO PERPETUATE THE ORIGINAL LOCATION OF THIS CORNER:

Removed stone and set a 2"x24" O.D. galvanized iron pipe with a aluminum survkap with the section numbers stamped on it 4" above the ground. Reset the stone along the west side of iron pipe corner.

SKETCH, WITH COURSE AND DISTANCE TO ADJACENT CORNER IF DETERMINED IN THIS SURVEY. (May Sketch or Paste Reproduction on Reverse Side.)



Alm. Survkap  
Cheyenne Ground Datum Coor.  
N.53658.6159  
E.598558.7286

NO SCALE  
For corner ties  
See reverse side  
Field Survey  
April May 1989

I, Edward C. Fry certify that I have carefully ~~performed~~ reviewed the work done on the diagrammed corner as reported on this recordation form and approve the same.

*Edward C. Fry*  
Signature of Surveyor

P.E./L.S. #662

Registration No.

STATE OF WYOMING,  
Office of Clerk and Recorder,  
County of \_\_\_\_\_

This "corner record" was filed for record on the \_\_\_\_\_ day of \_\_\_\_\_, 19\_\_\_\_, was noted on the cross-index plat and is assigned page No. \_\_\_\_\_, in book No. \_\_\_\_\_.

County Official

Cross Index No. <u>R-5</u>	T. <u>13</u>	R. <u>66</u>	Mer.
_____	T. _____	R. _____	Mer.
_____	T. _____	R. _____	Mer.
_____	T. _____	R. _____	Mer.
_____	T. _____	R. _____	Mer.
_____	T. _____	R. _____	Mer.
_____	T. _____	R. _____	Mer.

